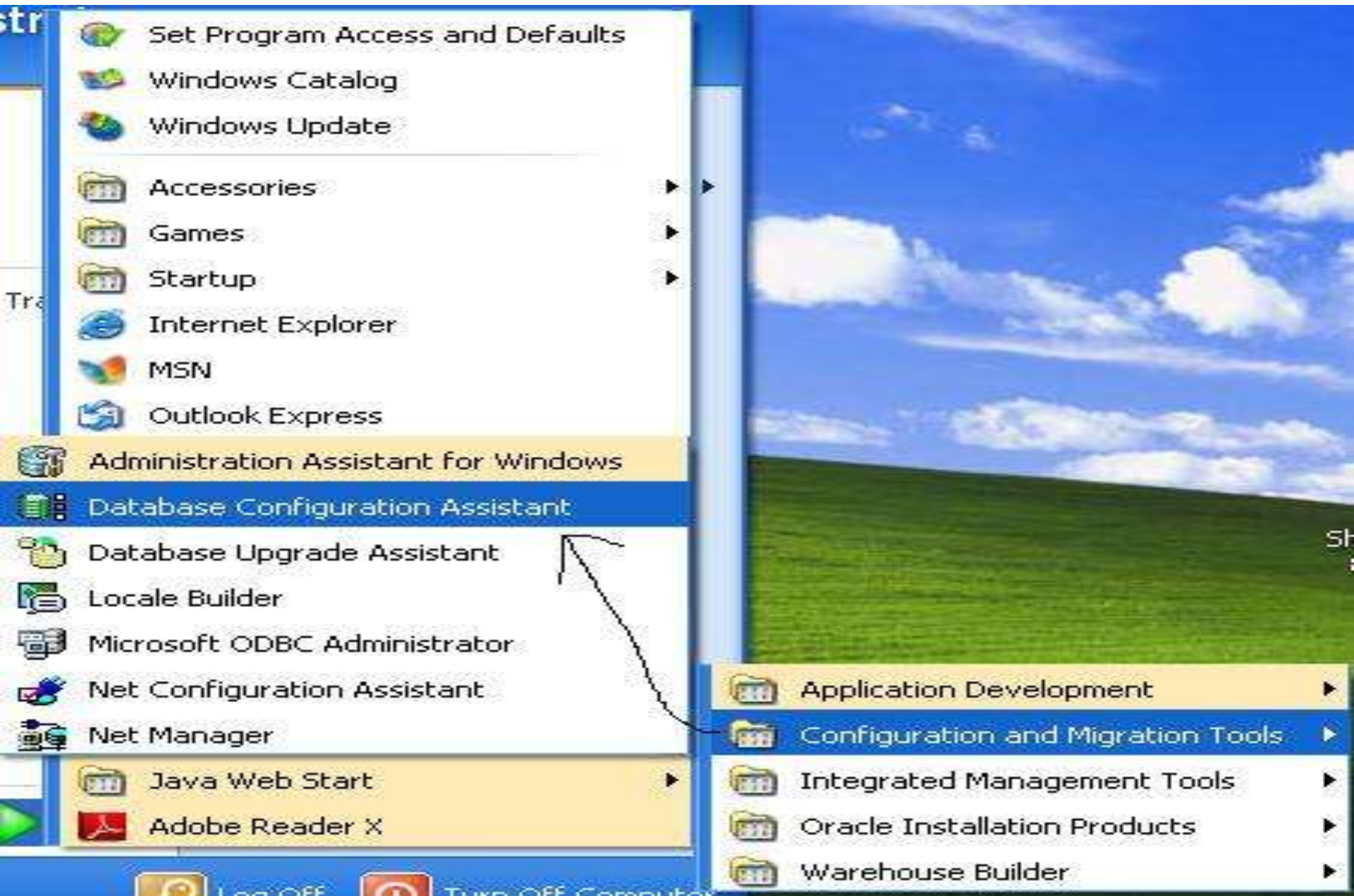


Creating the database





Welcome to Database Configuration Assistant for Oracle database.

The Database Configuration Assistant enables you to create a database, configure database options in an existing database, delete a database, and manage database templates.

Cancel

Help



Back

Next





Select the operation that you want to perform:

- Create a Database
- Configure Database Options
- Delete a Database
- Manage Templates
- Configure Automatic Storage Mana...

Cancel

Help



Back

Next





Templates that include datafiles contain pre-created databases. They allow you to create a new database in minutes, as opposed to an hour or more. Use templates without datafiles only when necessary, such as when you need to change attributes like block size, which cannot be altered after database creation.

Select	Template
<input type="radio"/>	General Purpose or Transaction F
<input type="radio"/>	Custom Database
<input checked="" type="radio"/>	Data Warehouse

[Show Details...](#)[Cancel](#)[Help](#)[Back](#)[Next](#)



An Oracle database is uniquely identified by a Global Database Name, typically of the form "name.domain".

Global Database Name:

A database is referenced by at least one Oracle instance which is uniquely identified from any other instance on this computer by an Oracle System Identifier (SID).

SID:

Cancel

Help



Back

Next





Configure Enterprise Manager

Register with Grid Control for centralized manage...

Management Service

No Agents Fo...

Configure Database Control for local management

Enable Alert Notifications

Outgoing Mail (SMTP) Server:

Recipient Email Address:

Enable Daily Disk Backup to Recovery Area

Backup Start Time:

02

00

OS Username:

OS Password:

Cancel

Help



Back

Next





For security reasons, you must specify passwords for the following user accounts in the new database.

- Use Different Administrative Passwords

User Name	Password
SYS	
SYSTEM	
DBSNMP	

- Use the Same Administrative Password for All Accou...

Password:

Confirm Password:

Cancel

Help

Back

Next



Select the storage mechanism you would like to use for the database.

File System

Use the File System for Database storage.

Automatic Storage Management (ASM)

Automatic Storage Management simplifies database storage administration and optimizes database layout for I/O performance. To use this option you must either specify a set of disks to create an ASM disk group or specify an existing ASM disk group.

Raw Devices

Raw partitions or volumes can provide the required shared storage for Real Application Clusters (RAC) databases if you do not use Automatic Storage Management and a Cluster File System is not available. You need to have created one raw device for each datafile, control file, and log file you are planning to create in the database.

Specify Raw Devices Mapping File

Cancel

Help



Back

Next



Finish



Specify locations for the Database files to be created:

Use Database File Locations from Template

Use Common Location for All Database Files

Database Files Location:

[Browse...](#)

Use Oracle-Managed Files

Database Area:

[Browse...](#)

[Multiplex Redo Logs and Control Files...](#)



If you want to specify different locations for any database files, pick any of the above options except Oracle-Managed Files and use the Storage page later to customize each file location. If you use Oracle-Managed Files, Oracle automatically generates the names for database files, which can

[File Location Variables...](#)

[Cancel](#)

[Help](#)

[Back](#)

[Next](#)

[Finish](#)



Choose the recovery options for the database:

Specify Flash Recovery Area

This is used as the default for all disk based backup and recovery operations, and is also required for automatic disk based backup using Enterprise Manager. Oracle recommends that the database files and recovery files be located on physically different disks for data protection and performance.

Flash Recovery Area:

Flash Recovery Area Size:

Enable Archiving



Sample Schemas

Custom Scripts

Sample Schemas illustrate the use of a layered approach to complexity, and are used by some demonstration programs. Installing this will give you the following schemas in your database: Human Resources, Order Entry, Online Catalog, Product Media, Information Exchange, Sales History. It will also create a tablespace called EXAMPLE. The tablespace will be about 130 MB.

Specify whether or not to add the Sample Schemas to your database.

Sample Schemas

Cancel

Help

< Back

Next >

Finish



Memory Sizing Character Sets Connection Mode

Typical

Memory Size (SGA and PGA): MB

Percentage: 40 % 250 MB 1203 MB

Use Automatic Memory Management

Custom

Memory Management:

SGA Size:

PGA Size:

.....
Total Memory for Oracle: 481 M Bytes



Oracle recommends using the enhanced default security settings.

- Keep the enhanced 11g default security settings (recommended)
These settings include enabling auditing and a new default password profile.

- Revert to pre-11g default security settings

To disable a particular category of enhanced settings for compatibility purposes choose from the following.

- Revert audit settings to pre-11g defaults
- Revert password profile settings to pre-11g defaults

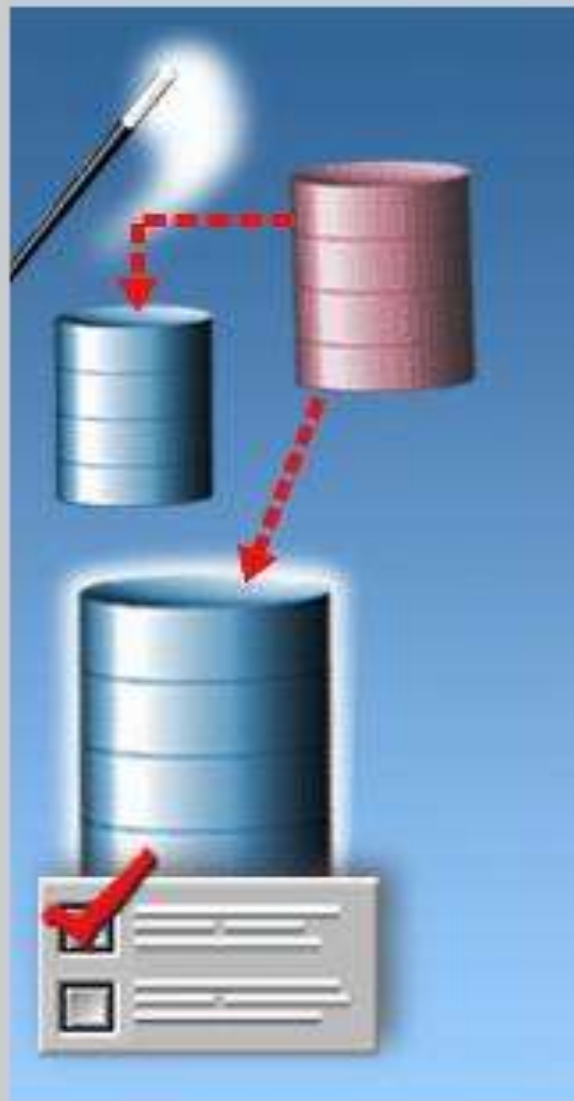
Cancel

Help

< Back

Next >

Finish



Oracle Database 11g provides the ability to automatically manage maintenance tasks such as optimizer statistics collection and proactive advisor reports. These tasks are run in a predefined maintenance window and their CPU consumption is throttled to prevent them from interfering with normal user work. The default maintenance windows are 10:00 PM - 2:00 AM on weekdays, and all weekend long. These defaults can be changed using Enterprise Manager at any time.

Enable automatic maintenance tasks

Cancel

Help

Back

Next

Finish



Database Storage

From the **Database Storage** page, you can specify storage parameters for database creation. This page displays a tree listing and summary view (multi-column lists) to enable you to change and view the following objects:

- Control files
- Tablespaces
- Datafiles
- Rollback Segments
- Redo Log Groups

From any object type folder, click **Create** to create a new object. To delete an object, select the specific object from within the object type folder and click **Delete**.

Important: If you select a database template including data files, then you will not be able to add or remove data files,

Create

Delete

File Location Variables...

Cancel

Help

Back

Next

Finish



Select the database creation options:

Create Database

Save as a Database Template

Name:

ACMEDW

Description:

Generate Database Creation Scripts

Destination
Directory:

C:\app\Administrator\admi

Browse...

Cancel

Help



Back

Next



Finish



The following operations will be performed:
A database called "ACMEDW" will be created.

Database Details:

Data Warehouse

Use this database template to create a pre-configured database optimized for data warehousing.

Common Options

Option	Selected
Oracle JVM	true
Oracle Text	true
Oracle XML DB	true
Oracle Multimedia	true

Save as an HTML file...

OK

Cancel

Help



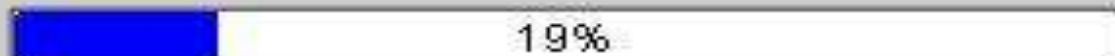
Change Assurance

- Reducing the risk and disruption of change
- Database Replay
- SQL Performance Analyzer

✓ Copying database files

- Creating and starting Oracle instance
- Completing Database Creation

Clone database creation in progress



Log files for the current operation are located at:
C:\app\Administrator\cfgtoollogs\dbca\ACMEDW

Stop



Database creation complete. For details check the logfiles at:
C:\app\Administrator\cfgtoollogs\dbca\ACMEDW.

Database Information:

Global Database Name: ACMEDW


System Identifier(SID): ACMEDW

Server Parameter Filename: C:\app\Administrator\product\11.1.0\db_2\database\spfileACMEDW.ora

The Database Control URL is <https://localhost:1158/em>

Note: All database accounts except SYS, SYSTEM, DBSNMP, and SYSMAN are locked. Select the Password Management button to view a complete list of locked accounts or to manage the database accounts(except DBSNMP and SYSMAN). From the Password Management window, unlock only the accounts you will use. Oracle Corporation strongly recommends changing the default passwords immediately after unlocking the account.

select this option



Password Management...

Exit

Password Management



Lock / unlock database user accounts and / or change the default passwords:

User Name	Lock Account?	New Password	Confirm Password
OLAPSYS	✓		
SI_INFORMTN_SCHEMA	✓		
OWBSYS		*****	*****
FLWS_030000	✓		
ORDPLUGINS	✓		
SPATIAL_WFS_ADMIN_...	✓		
WKPROXY	✓		
SPATIAL_CSW_ADMIN_...	✓		
XDB	✓		
APEX_PUBLIC_USER	✓		
DIP	✓		

OK Cancel Help

You can see the database created as shown below

