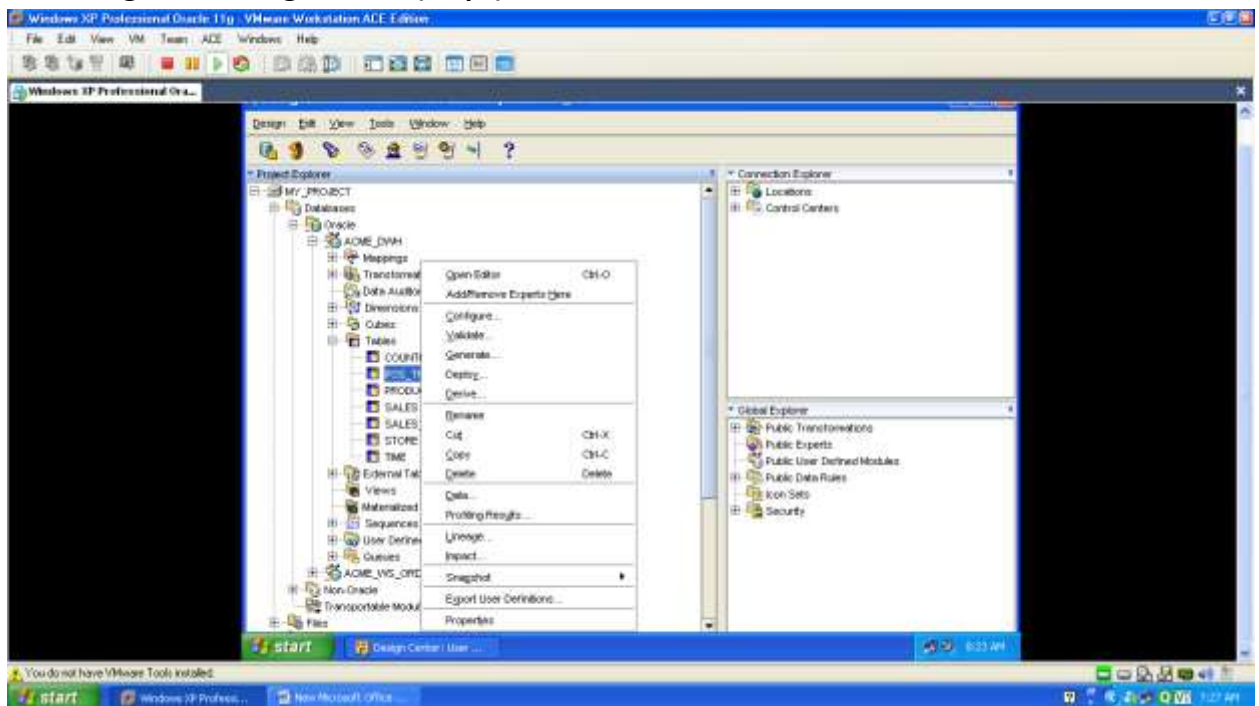


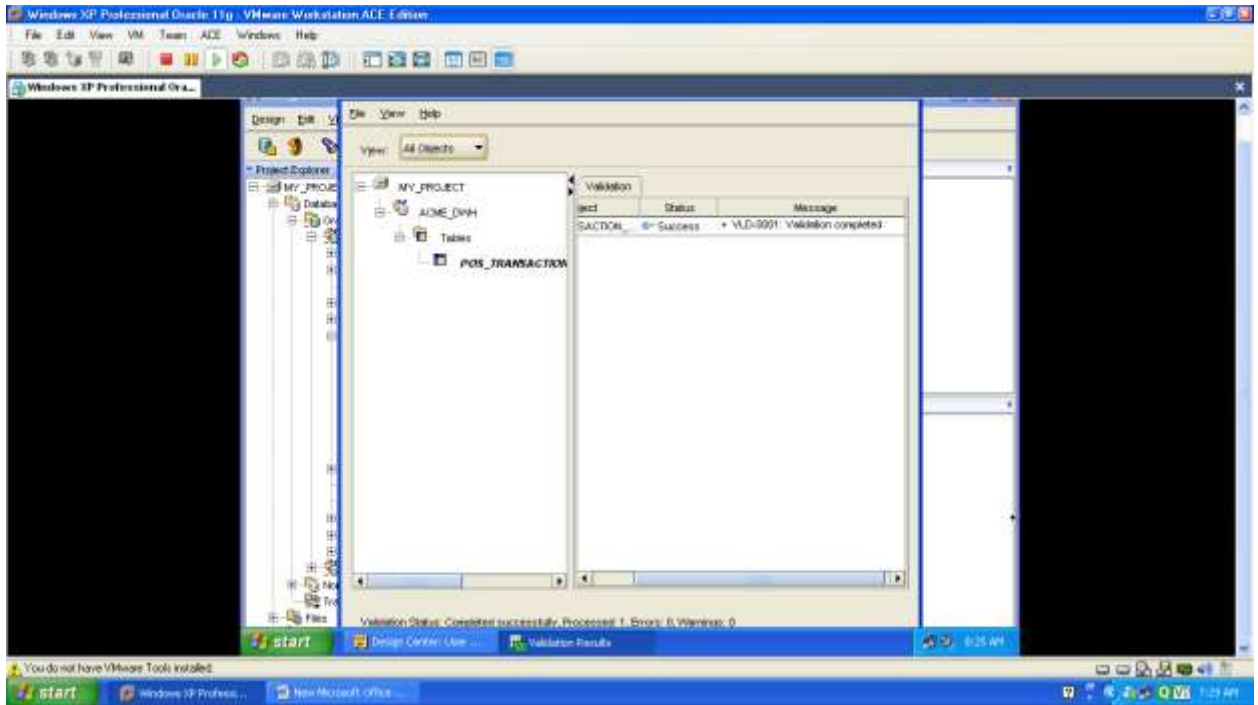
VALIDATING, GENERATING, DEPLOYING AND EXECUTING OBJECTS

- 1) TO BUILD THE DATAWAREHOUSE IN AN ACTUAL DATABASE AND LOAD DATA INTO IT.
- 2) INVOLVE THE FOLLOWING FOUR STEPS :
 - A) VALIDATING : Checking the objects and mapping for errors
 - B) GENERATING : Creating the code that will be executed to create the objects and run the mappings
 - C) DEPLOYING : Creating the physical objects in the database from the logical objects we designed in the warehouse builder
 - D) EXECUTING : Executing the logic that is found in the deployed mappings for mapping and transformation

VALIDATING:

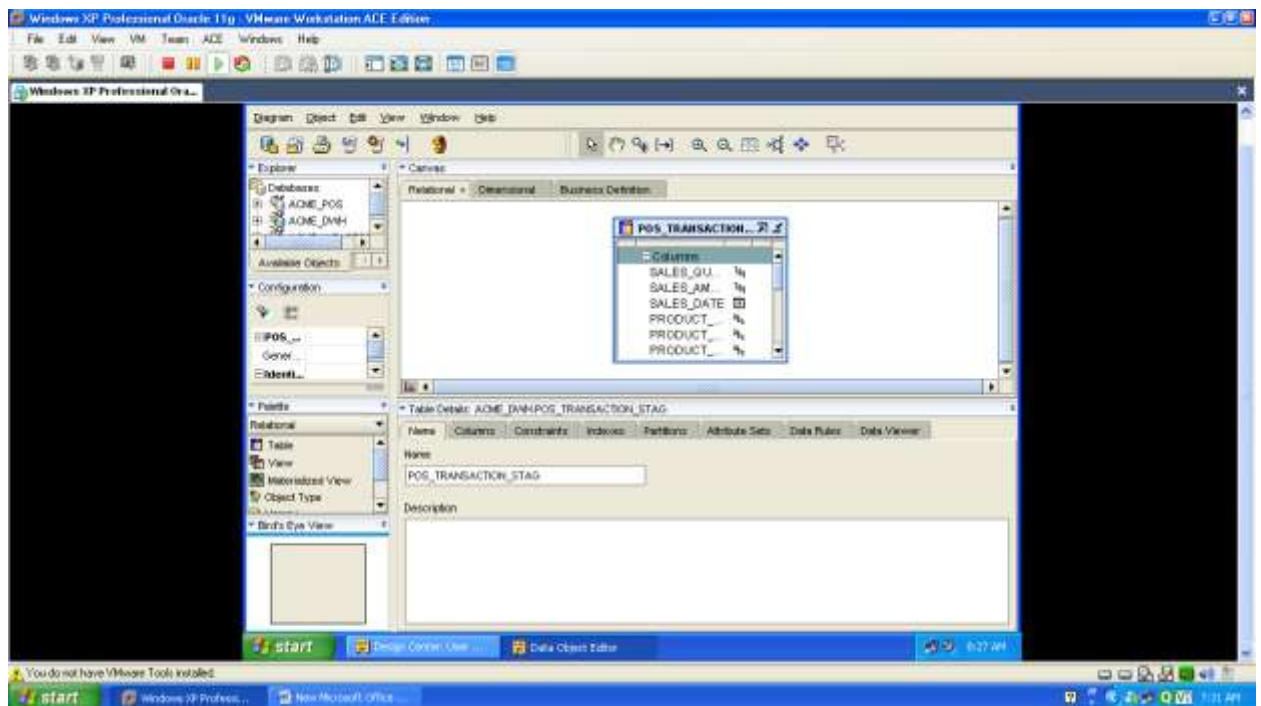
A) Validating in the design center (steps)

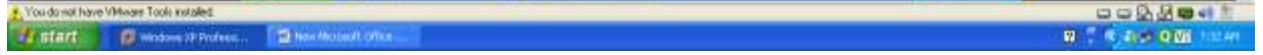
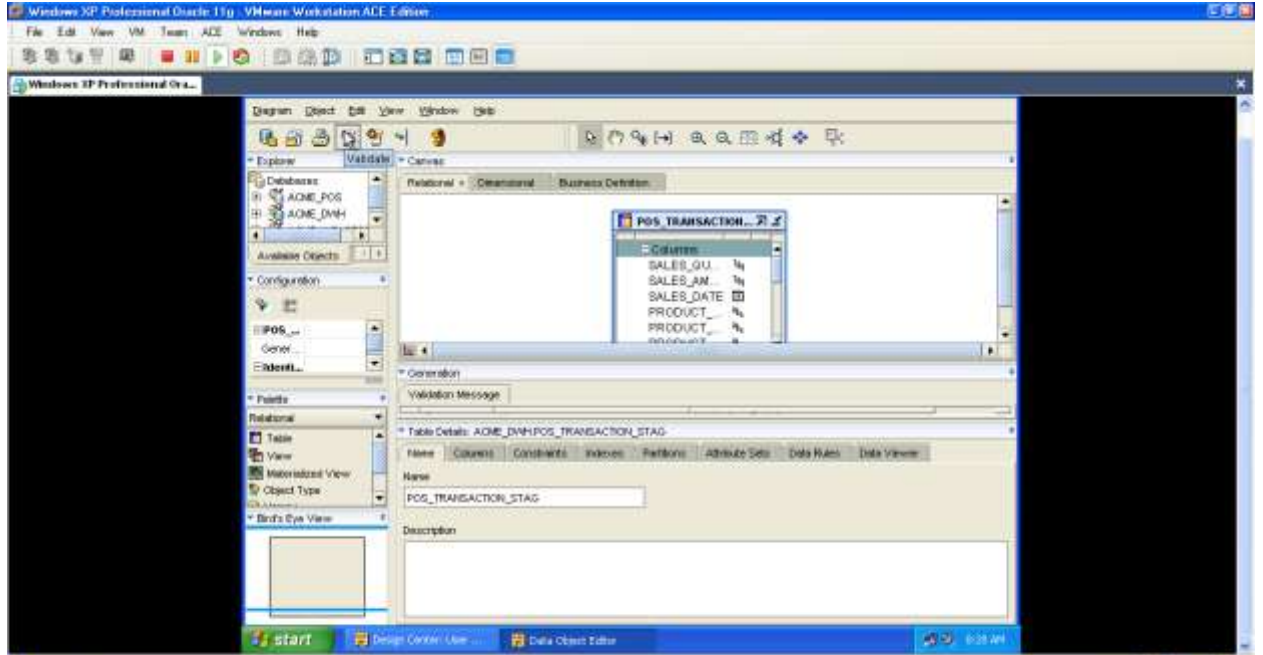
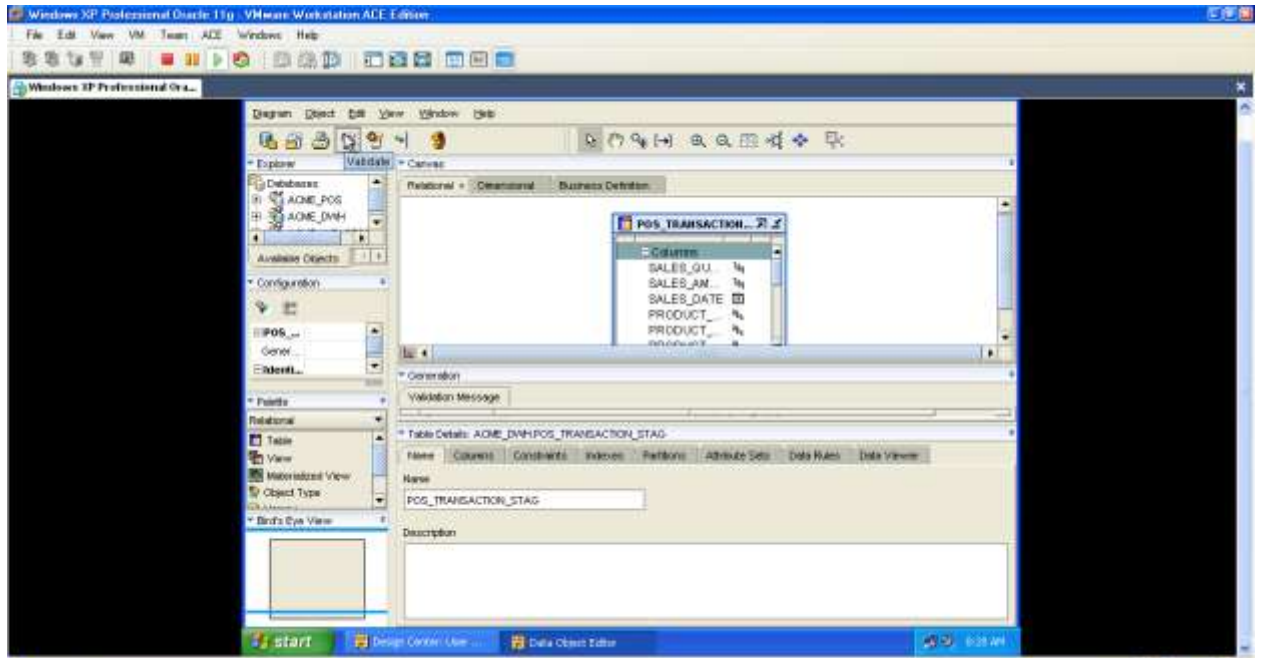


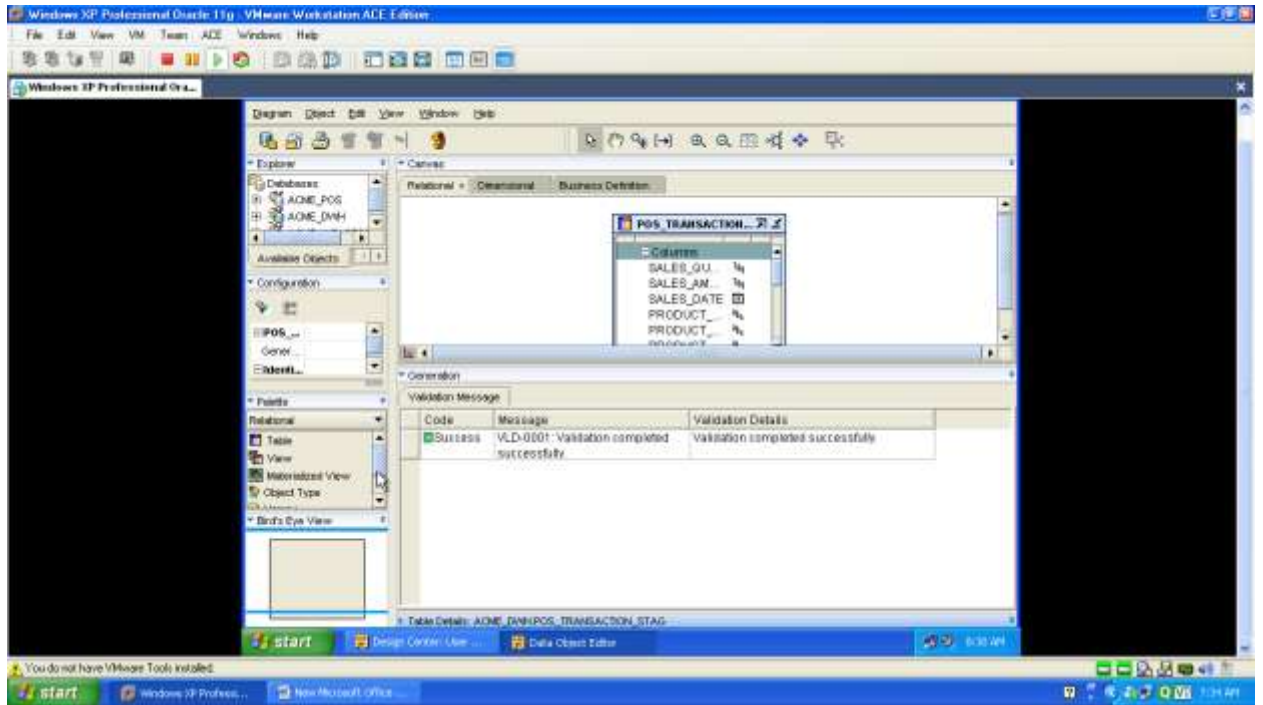


VALIDATING FROM THE EDITORS :

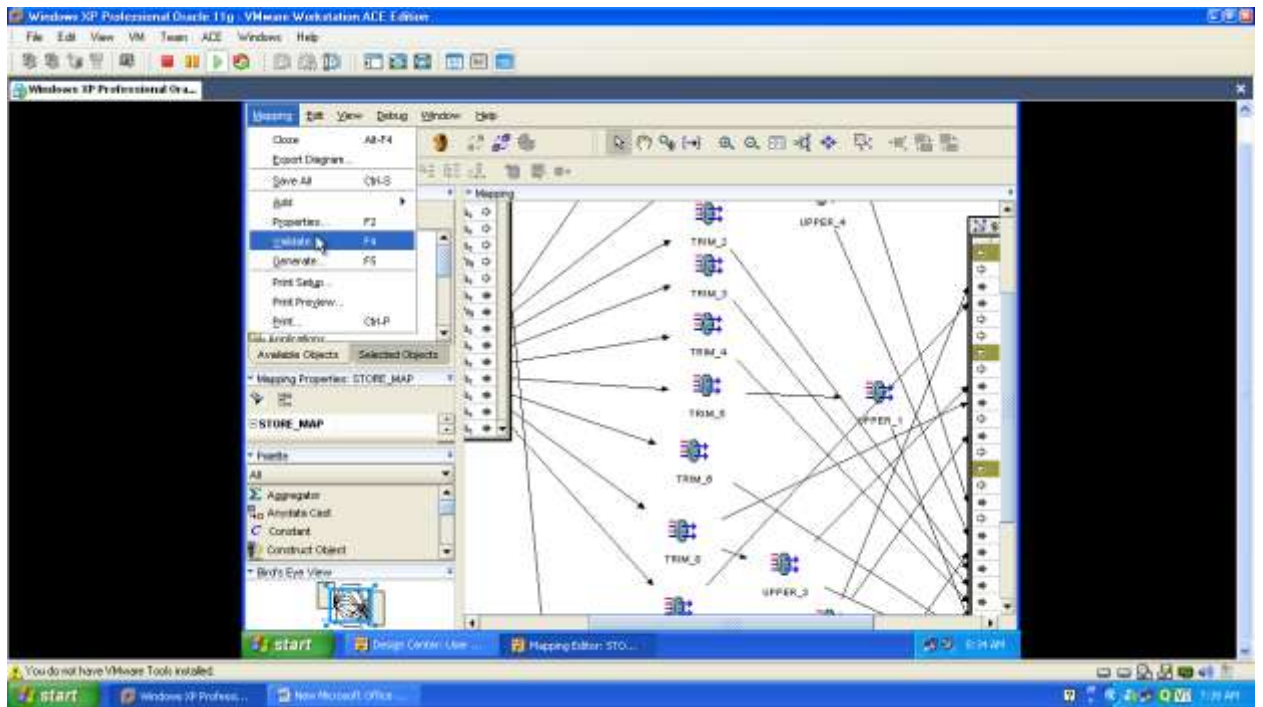
- 1) DOUBLE CLICK ON THE POS_TRANS_STAGE TABLE NAME IN THE DESIGN CENTER TO LAUNCH THE DATA OBJECT EDITOR.

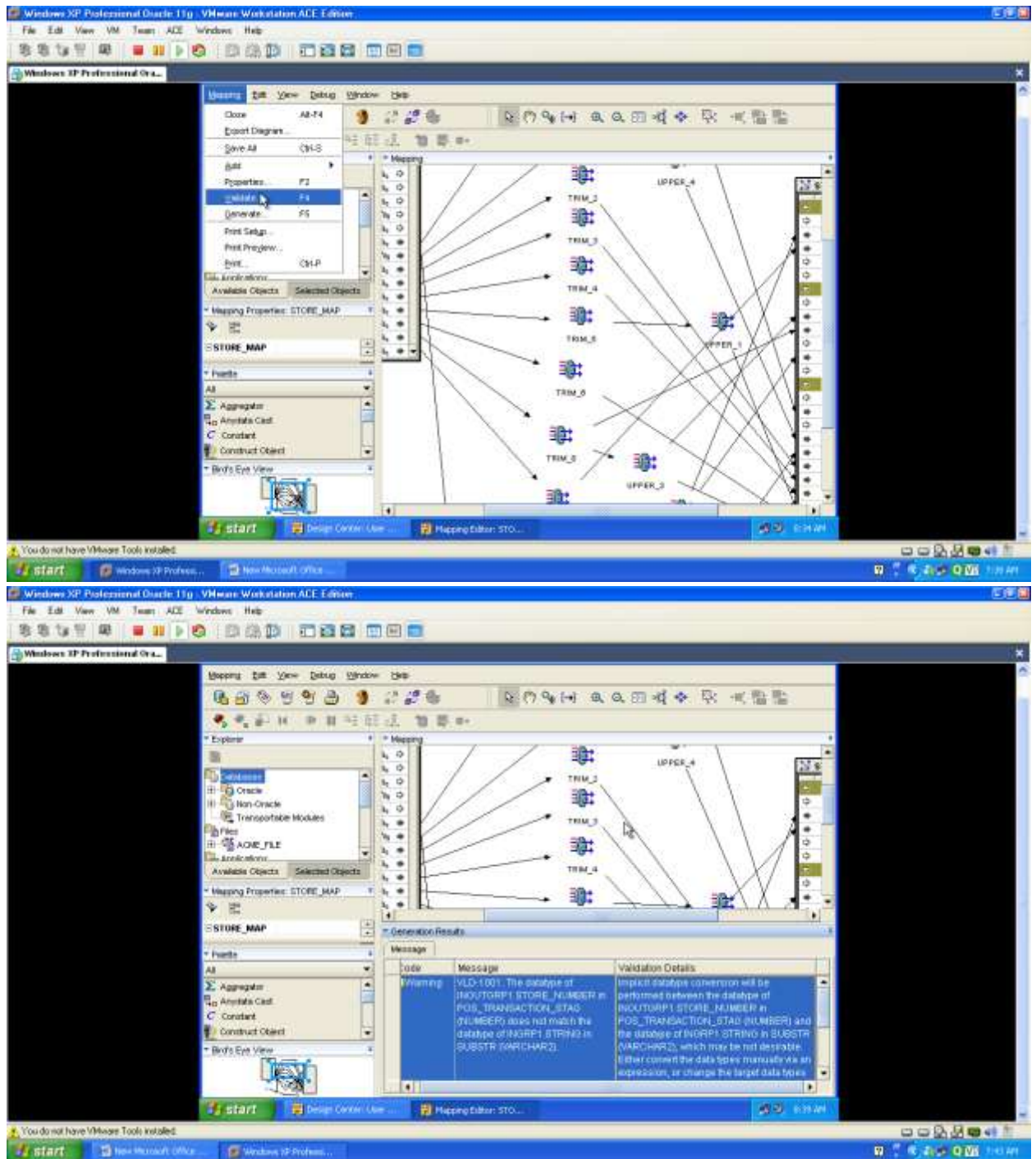






VALIDATING IN THE MAPPING EDITOR:

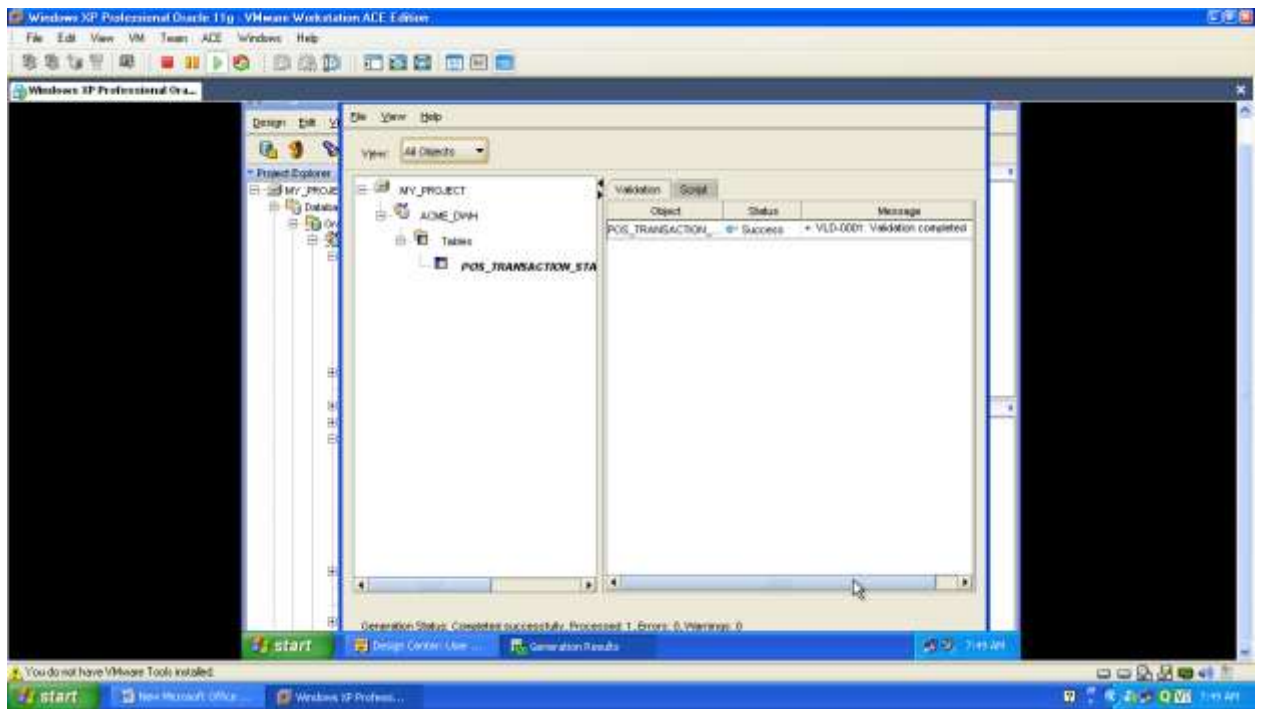
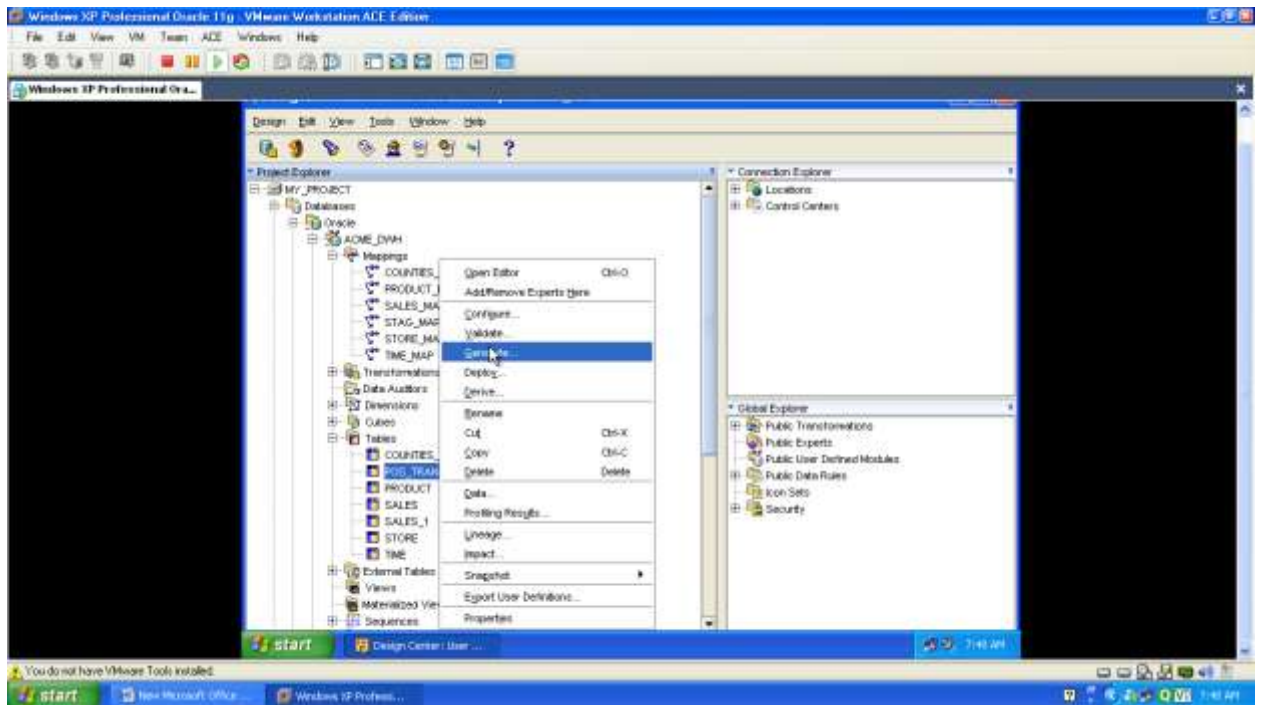


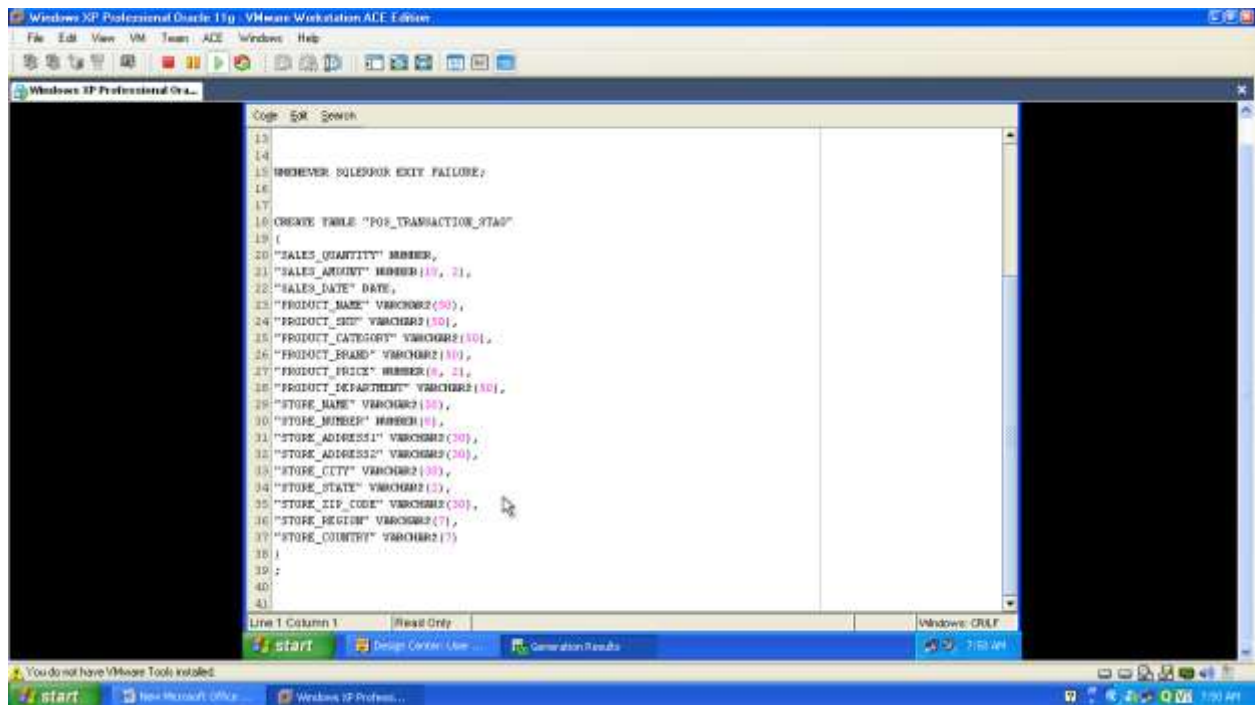
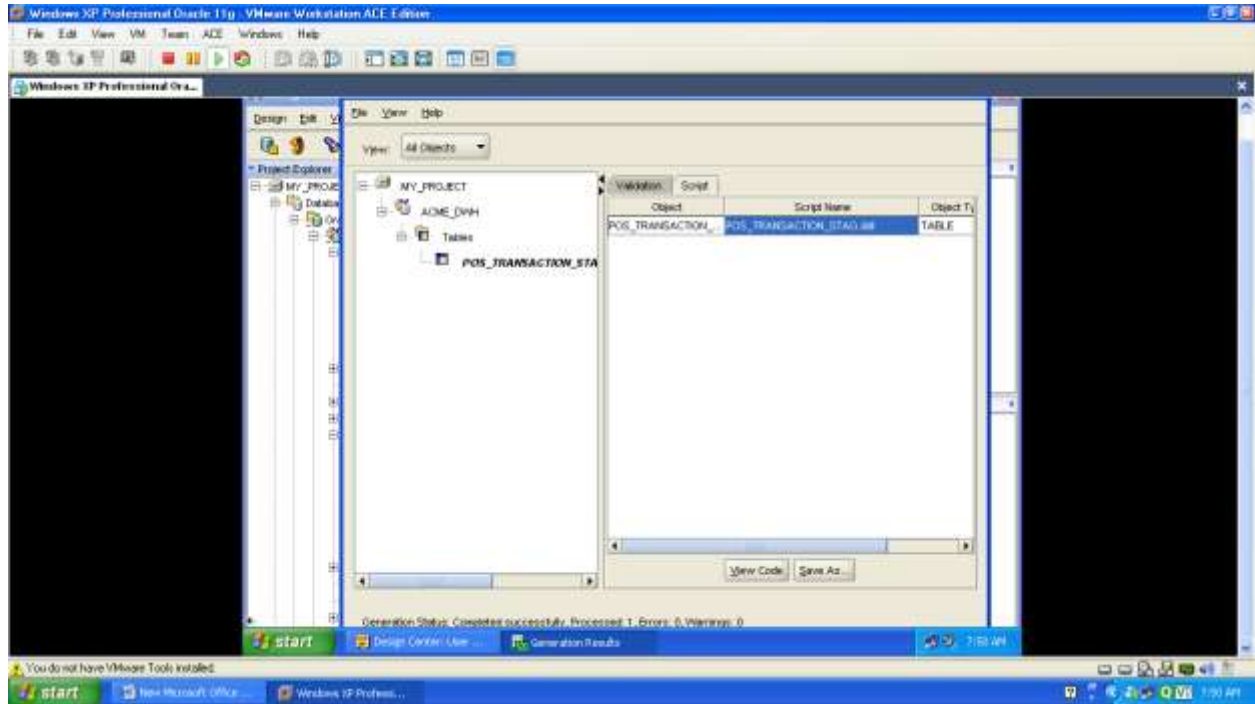


GENERATING :

- 1) THE GENERATION STEPS IN THE WAREHOUSE BUILDER IS USED TO BUILD AND LOAD OUR DATA WAREHOUSE.
- 2) THE OBJECTS – DIMENSIONS , CUBE AND TABLES WILL HAVE PL/SQL CODE WILL BE PRODUCED WHEN IT RUN , WILL LOAD THE OBJECT.

GENERATING IN THE DESIGN CENTER:





DEPLOYING :

- 1) THE PROCESS OF DEPLOYING IS WHERE DATABASE OBJECTS ARE ACTUALLY CREATED AND PL/SQL CODE IS ACTUALLY LOADED AND COMPILED IN THE TARGET DATABASE**
- 2) TO PERFORM THE PROCESS OF DEPLOYMENT NOW WE HAVE TO COMMUNICATE TO THE TARGET DATABASE**
- 3) WE REQUIRES OUR CONTROL CENTER SERVICES (NOTE : The control service normally starts up. So if we are running the database server locally , we no need to bother with running any of the scripts.)**

DEPLOYING IN THE DESIGN CENTER AND DATA OBJECT EDITIOR